



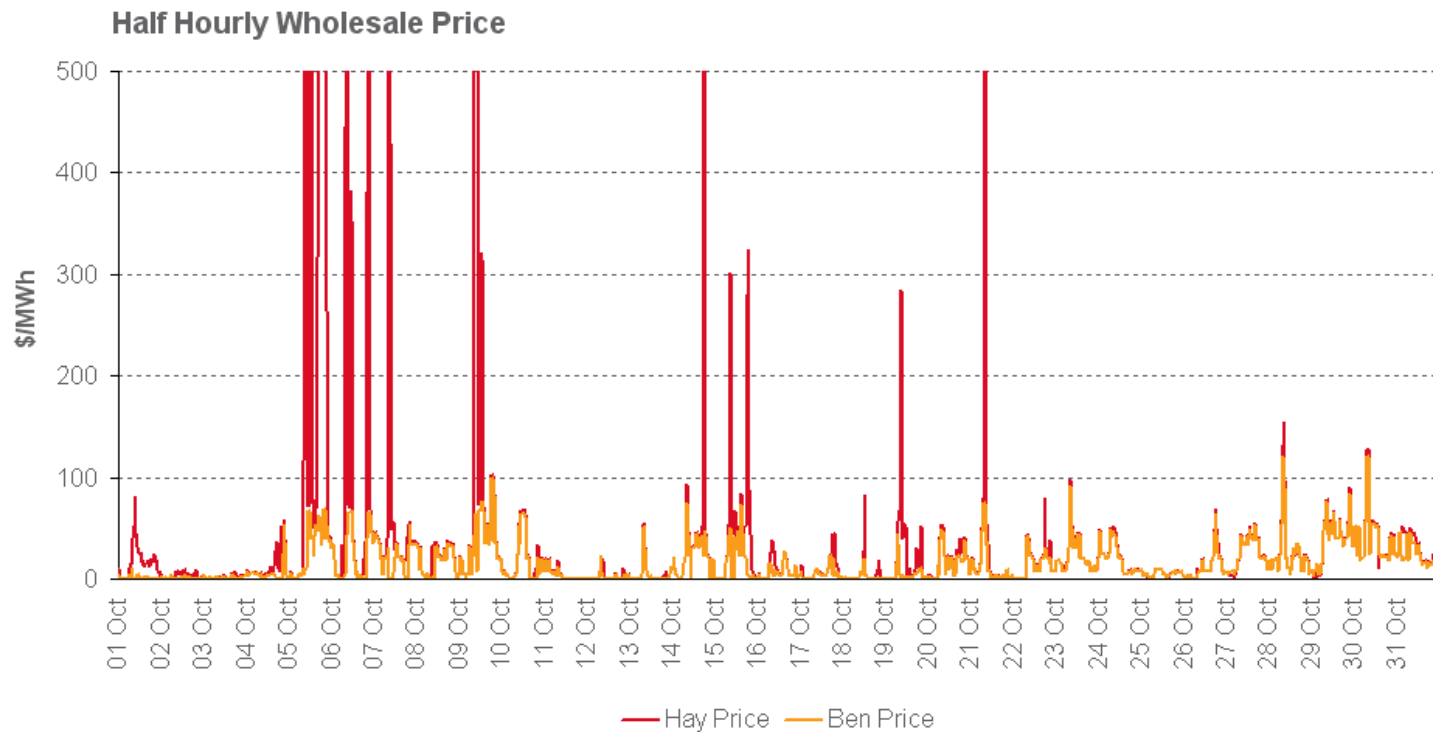
## Monthly Operational Data

For the month ending 31 October 2009

October 2009

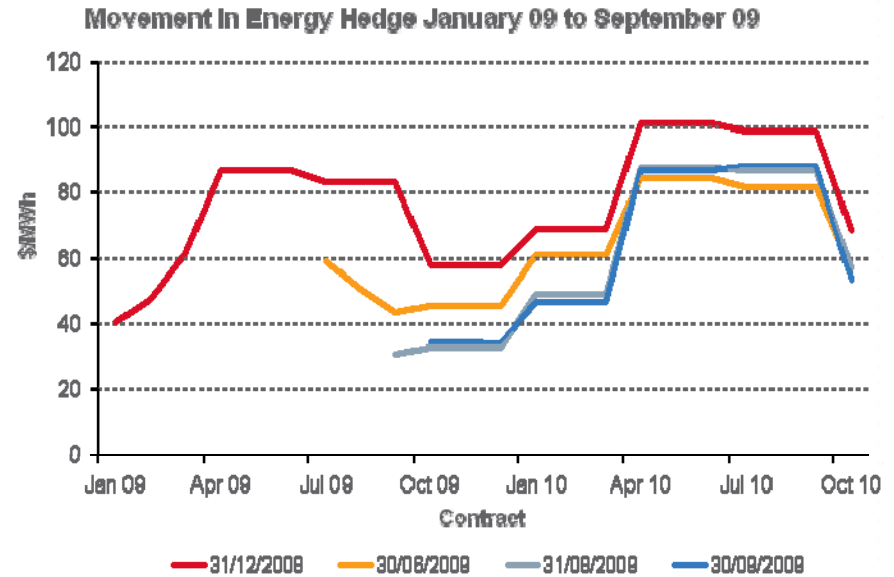
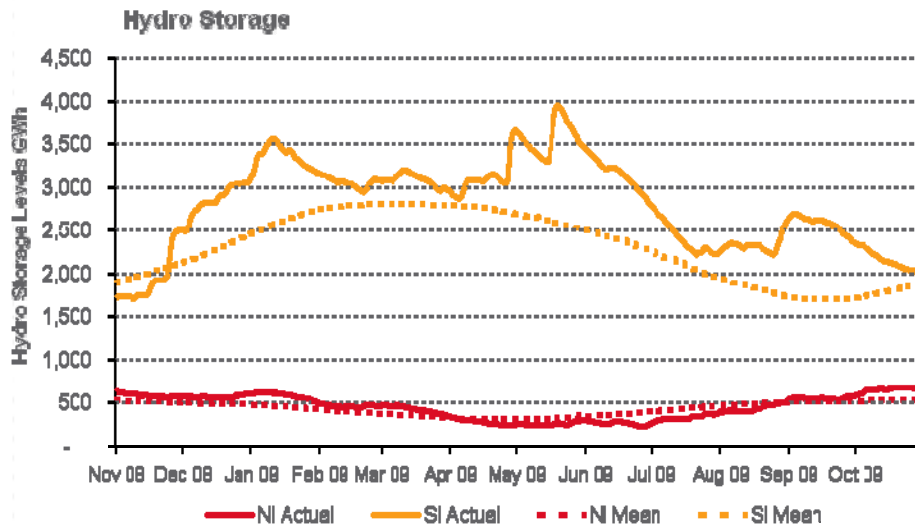
# Wholesale Electricity Prices – October 2009

- The average price at Haywards (North Island) for the month of October 2009 was \$39/MWh while the average price at Benmore (South Island) was \$15/MWh
- Peaks were driven by volatility in the market caused by a combination of lack of high priced reserve, wind volatility and reduced availability of North Island generation

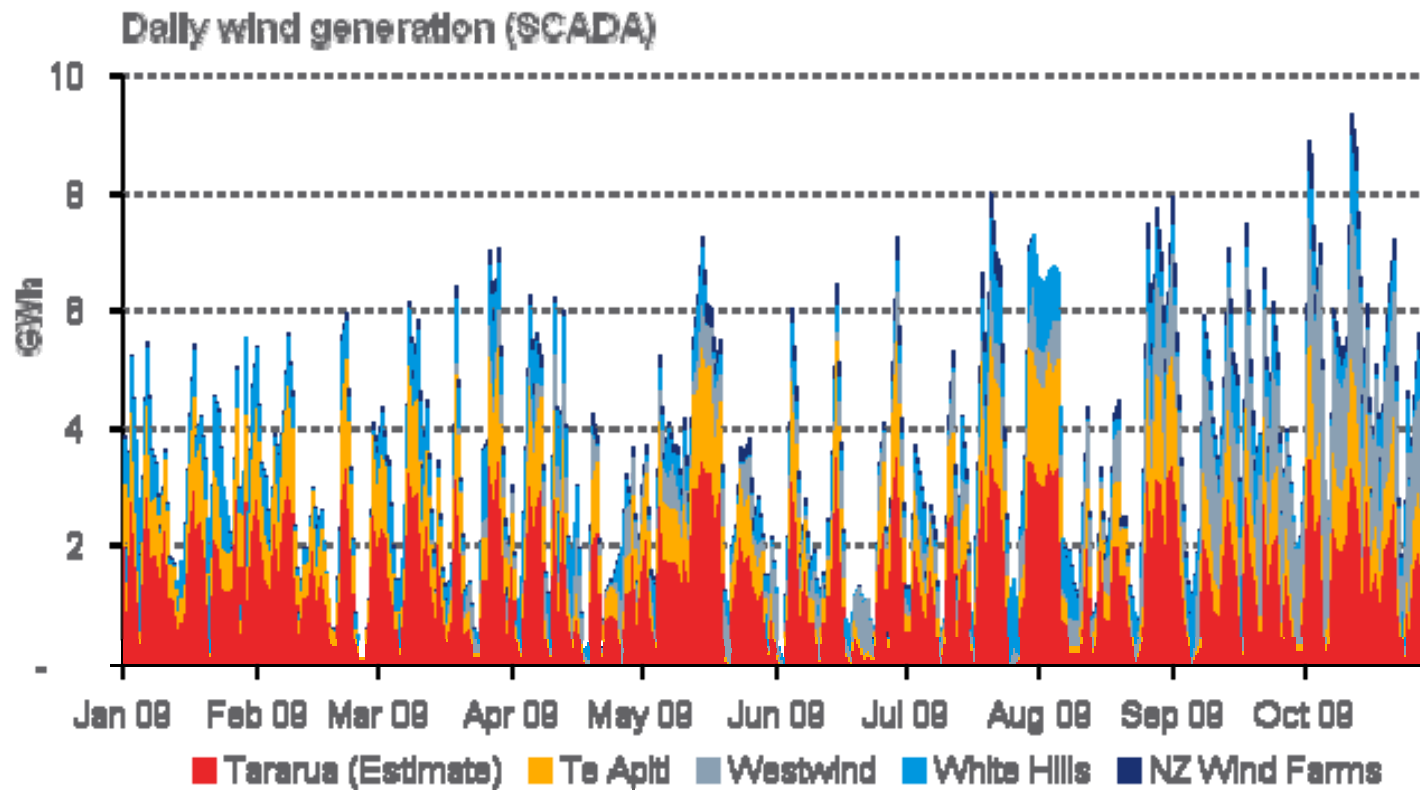


# Storage levels and wholesale electricity prices

- Storage is just above mean in the both the North and South Islands



# Wind generation also continues to contribute to volatility

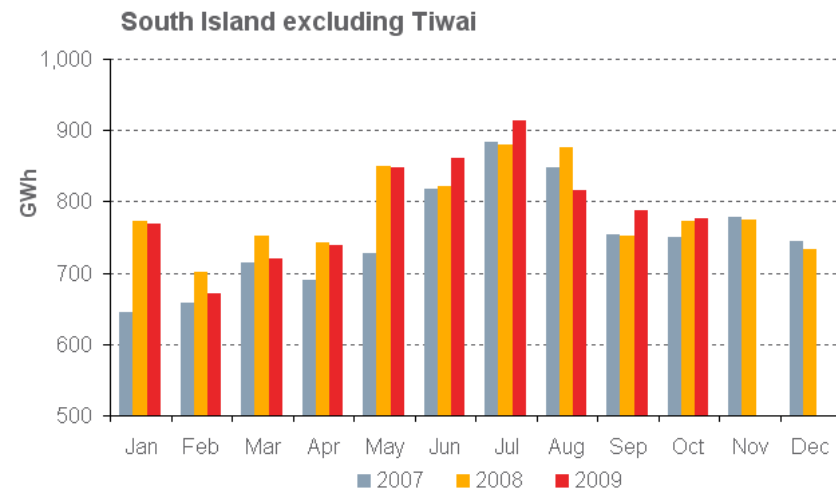
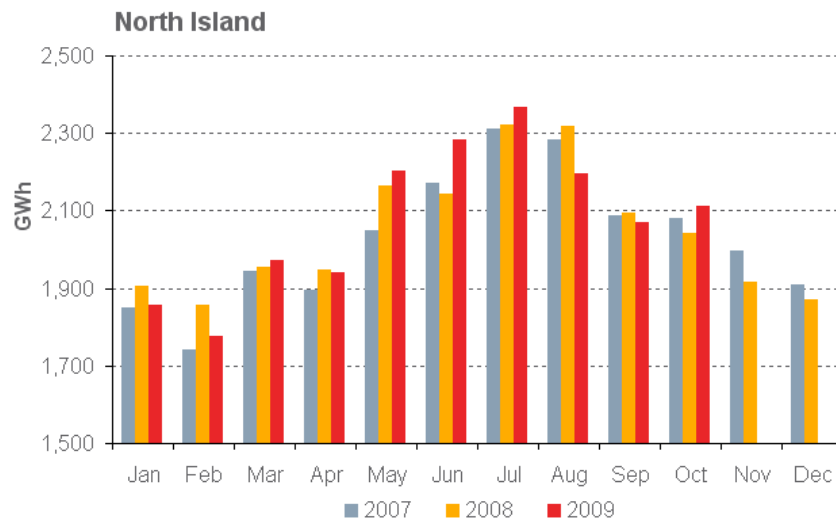


# Monthly demand comparison: October 2009



- Demand at the predominantly industrial nodes was 10% higher in October 2009 than in October 2008
- NIWA’s National Climate Summary for October 2009 reports:
  - New Zealand experienced the coldest October in 64 years with a national average of 10.6°C (1.4°C below the long-term October average).

	Year to date			Growth rate YTD		October Demand			Growth rate Oct	
	GWh			% p.a.		GWh			% p.a.	
	2009	2008	2007	1 year	2 year	2009	2008	2007	1 year	2 year
<b>North Island</b>	20,781	20,747	20,411	0.2%	0.9%	2,113	2,042	2,080	3.5%	0.8%
<b>South Island</b>	7,900	7,915	7,487	-0.2%	2.7%	776	772	749	0.5%	1.8%
<b>Total</b>	28,681	28,662	27,897	0.1%	1.4%	2,889	2,814	2,829	2.7%	1.0%



## Contact Generation and Retail data



Data		Measure	The month ending 31 October 2009	The month ending 31 October 2008	4 months ended 31 October 2009	4 months ended 31 October 2008
Generation	Thermal generation	GWh	258	270	1,444	1,688
	Geothermal generation	GWh	199	186	798	778
	Hydro generation	GWh	273	382	1,201	1,056
	Total generation	GWh	730	838	3,443	3,522
	Average National wholesale electricity price <sup>1</sup>	\$/MWh	32.50	44.83	33.95	87.77
Retail Purchases	Total electricity purchases	GWh	651	752	2,805	3,019
	Average National electricity purchase price <sup>2</sup>	\$/MWh	38.50	46.88	37.47	104.85
Other	Retail electricity sales	GWh	629	717	2,731	2,861
	Gas used in internal generation	PJ	2.1	2.3	11.4	13.8
	Retail gas sales	PJ	0.3	0.3	1.5	1.7
	Wholesale gas sales	PJ	1.5	1.7	4.4	4.5
	LPG sales	tonnes	6,248	6,337	27,749	31,245

<sup>1</sup> This is the price received by Contact for its generation. It excludes contracts for differences.

<sup>2</sup> This price excludes contracts for differences.



## Additional Information – North Island and South Island Split

Data	Measure	The month ending 31 October 2009	The month ending 31 October 2008	4 months ended 31 October 2009	4 months ended 31 October 2008	
Generation	Average North Island wholesale electricity price <sup>1</sup>	\$/MWh	42.33	49.22	40.18	87.20
	Average South Island wholesale electricity price <sup>1</sup>	\$/MWh	16.40	39.69	22.47	89.06
	Average National wholesale electricity price <sup>1</sup>	\$/MWh	32.50	44.83	33.95	87.77
Retail Purchases	North Island electricity purchases	GWh	372	406	1,556	1,595
	South Island electricity purchases	GWh	279	346	1,249	1,424
	Total electricity purchases	GWh	651	752	2,805	3,019
	Average North Island electricity purchase price <sup>2</sup>	\$/MWh	53.29	49.68	44.72	88.60
	Average South Island electricity purchase price <sup>2</sup>	\$/MWh	18.80	43.58	28.44	123.06
	Average National electricity purchase price <sup>2</sup>	\$/MWh	38.50	46.88	37.47	104.85

<sup>1</sup> This is the price received by Contact for its generation. It excludes contracts for differences.

<sup>2</sup> This price excludes contracts for differences.



## Customer numbers



	As at 31 October 2009	As at 30 September 2009	As at 31 October 2008
Electricity customer numbers	478,500	479,000	518,500
Gas customer numbers	65,500	65,500	74,000
LPG customer numbers (includes franchisees)	55,500	55,000	53,500

